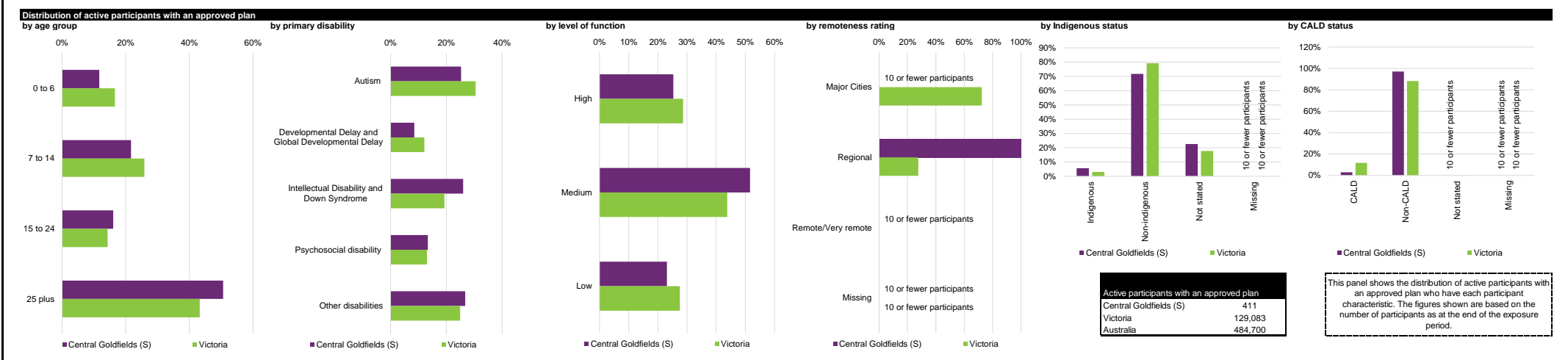
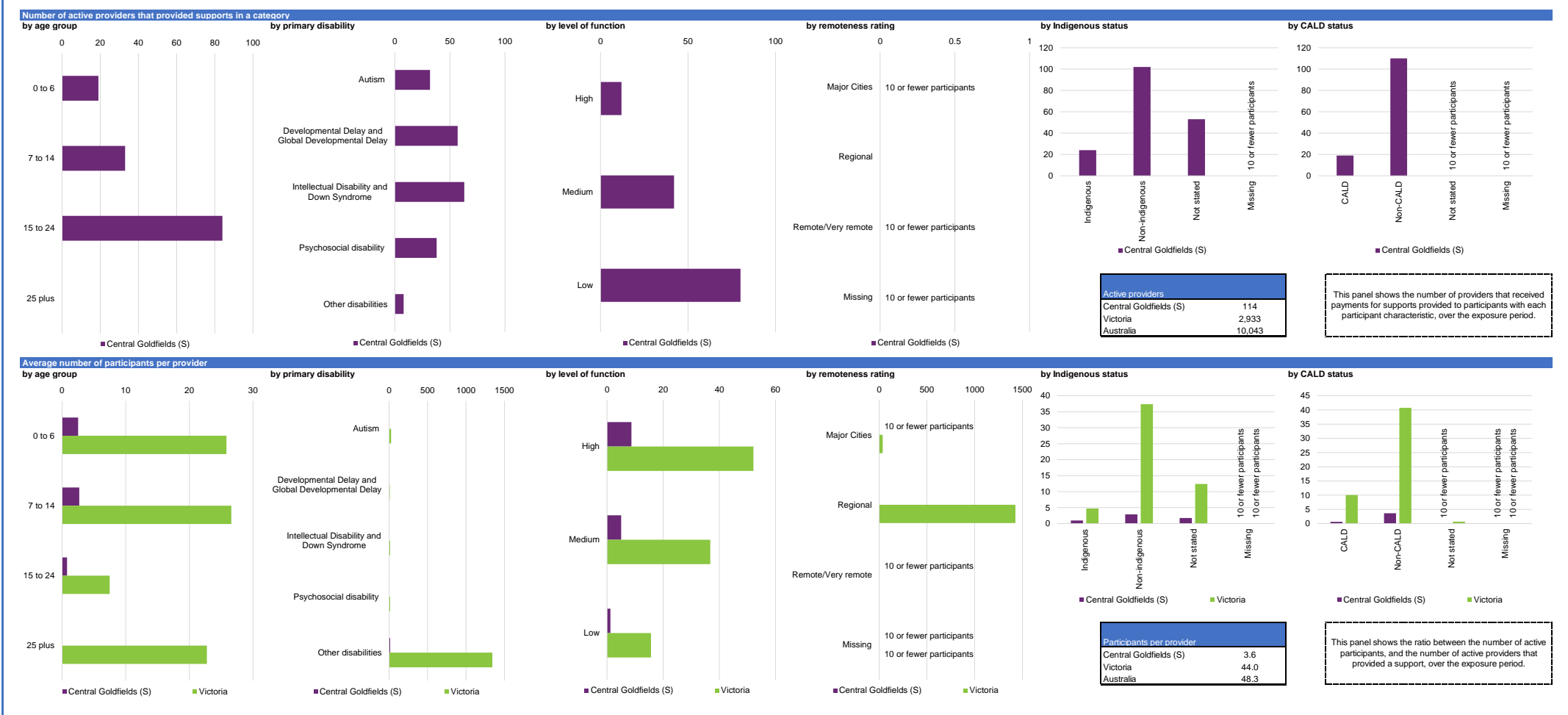


Participant profile

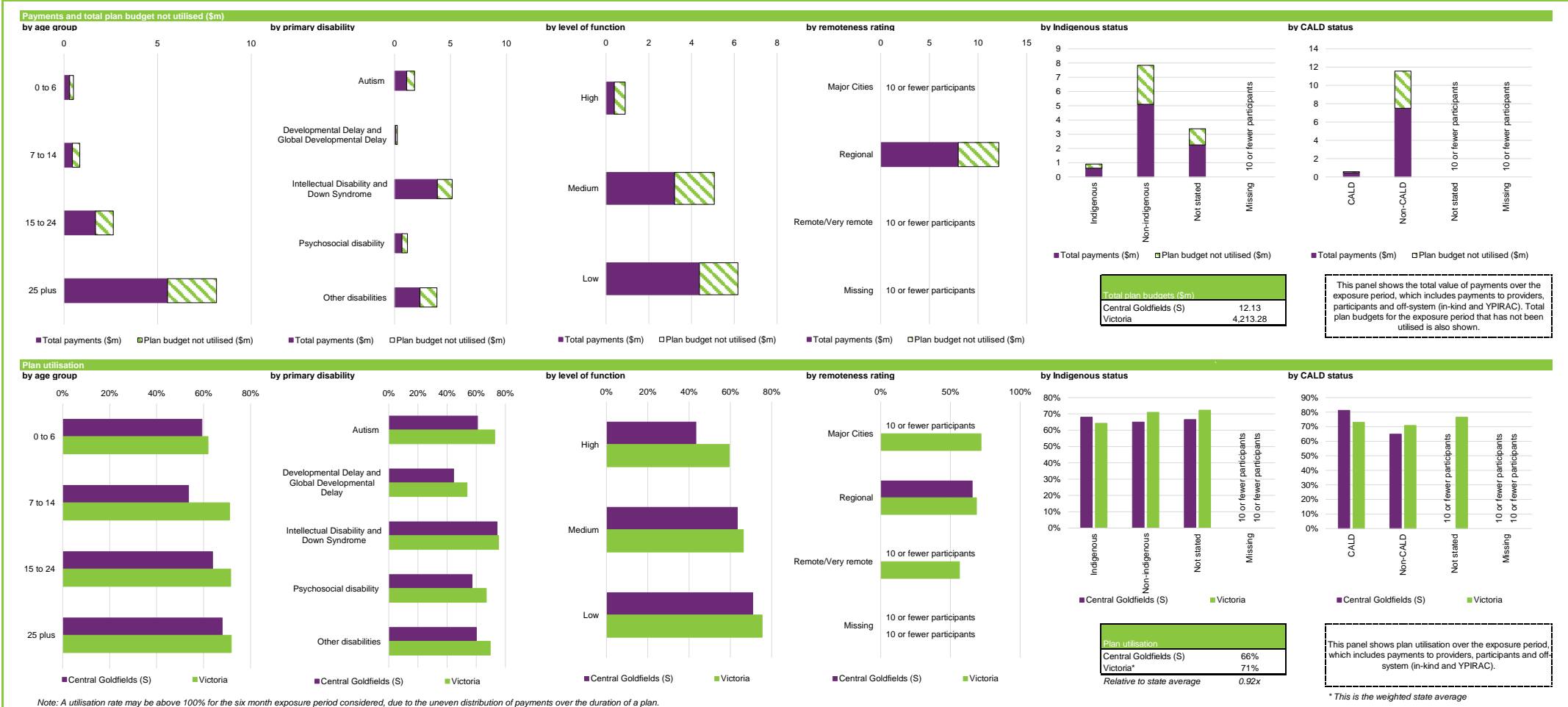
Please note that the data presented are based on only six months of data and not a full year.



Service provider indicators



Plan utilisation



Outcomes framework



Support category summary

Support category	Active participants with approved plans	Active providers	Participants per provider	Total plan budgets (\$m)	Average plan budget (\$)	Payments (\$m)	Average payments (\$)	Utilisation	Outcomes indicator on choice and control	Has the NDIS helped with choice and control?
<b>Core</b>										
Consumables	305	23	13.3	0.3	835	0.2	546	65%	62%	70%
Daily Activities	239	33	7.2	5.0	20,782	3.8	15,818	76%	59%	72%
Community	306	28	10.9	3.2	10,462	1.9	6,240	60%	58%	69%
Transport	186	3	62.0	0.3	1,590	0.3	1,623	101%	54%	69%
<b>Core total</b>	<b>392</b>	<b>48</b>	<b>8.2</b>	<b>8.7</b>	<b>22,246</b>	<b>6.2</b>	<b>15,710</b>	<b>71%</b>	<b>59%</b>	<b>69%</b>
<b>Capacity Building</b>										
Choice and Control	10 or fewer participants	10 or fewer participants	10 or fewer participants	10 or fewer participants	10 or fewer participants	10 or fewer participants	10 or fewer participants	10 or fewer participants	48%	67%
Daily Activities	399	52	7.7	1.7	4,255	0.6	1,617	38%	57%	68%
Employment	23	5	4.6	0.2	9,408	0.2	6,608	70%	52%	53%
Relationships	36	11	3.3	0.3	7,457	0.1	2,127	29%	21%	68%
Social and Civic	22	3	7.3	0.0	1,910	0.0	487	26%	10 or fewer participants	10 or fewer participants
Support Coordination	158	36	4.4	0.4	2,755	0.3	1,864	68%	48%	64%
<b>Capacity Building total</b>	<b>406</b>	<b>86</b>	<b>4.7</b>	<b>2.8</b>	<b>6,921</b>	<b>1.3</b>	<b>3,247</b>	<b>47%</b>	<b>58%</b>	<b>68%</b>
<b>Capital</b>										
Assistive Technology	76	21	3.6	0.5	6,166	0.3	4,183	68%	69%	71%
Home Modifications	30	5	6.0	0.1	4,433	0.2	5,717	129%	43%	69%
<b>Capital total</b>	<b>92</b>	<b>24</b>	<b>3.8</b>	<b>0.6</b>	<b>6,539</b>	<b>0.5</b>	<b>5,320</b>	<b>81%</b>	<b>60%</b>	<b>69%</b>
<b>All support categories</b>	<b>411</b>	<b>114</b>	<b>3.6</b>	<b>12.1</b>	<b>29,518</b>	<b>8.0</b>	<b>19,382</b>	<b>66%</b>	<b>59%</b>	<b>68%</b>

Note: Only the major support categories are shown.

Note: The Capacity Building total includes Health and Wellbeing, Home Living and Lifelong Learning although these support categories are not shown.

Note: A utilisation rate may be above 100% for the six month exposure period considered, due to the uneven distribution of payments over the duration of a plan.

In addition, the utilisation rate for core supports may be above 100% due to fungibility which refers to the ability of participants to use their funding flexibly between different support types, albeit within certain limitation.

Indicator definitions	
Active participants with approved plans	Number of active participants who have an approved plan and reside in the LGA / have supports relating to the support category in their plan.
Active providers	Number of providers that received payments for supports provided to participants within the LGA / support category, over the exposure period.
Participants per provider	Ratio between the number of active participants and the number of active providers.
Total plan budgets	Value of supports committed in participant plans for the exposure period.
Payments	Value of all payments over the exposure period, including payments to providers, payments to participants and off-system payments (in-kind and Younger People In Residential Aged Care (YPIRAC)).
Utilisation	Ratio between payments and total plan budgets.
Outcomes indicator on choice and control	Proportion of participants who reported in their most recent outcomes survey that they choose who supports them.
Has the NDIS helped with choice and control?	Proportion of participants who reported in their most recent outcomes survey that the NDIS has helped with choice and control.